



3 Seater Sofa shown in Remco Light Grey



SEATTLE



01892 833464
[email: furn@barsleys.co.uk](mailto:furn@barsleys.co.uk)
www.barsleys.co.uk/all-furniture

Contrast stitching options

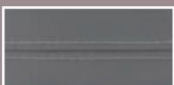
Contrast stitching will appear on seat cushions, back cushions, front borders and arms. Contrast stitching is optional for leather pieces only. There are 11 options for contrast stitching.



Kensington Putty
Beige Stitching



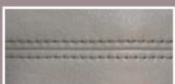
Kensington Tan
Beige Stitching



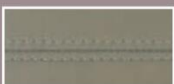
Kensington Petrol Blue
Dark Grey Stitching



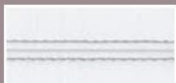
Kensington Conker
Sand Stitching



Kensington Stone
Beige Stitching



Kensington Taupe
Beige Stitching



Kensington Chalk
Cream Stitching



Kensington Black
Light Grey Stitching



Kensington Earth
Sand Stitching



Kensington Cloud
Dark Grey Stitching



Kensington Grey
Beige Stitching

Main cover and contrast stitching options can't be swapped. If contrast stitching is not selected, the furniture will be supplied with self-coloured stitching.



3 Seater Sofa is shown in Kensington Grey



SEATTLE



With clean, straight lines and sleek arm details, Seattle offers contemporary elegance to any space. Crisp tailoring details, paired with full and sumptuous cushions provide a beautiful balance of style and comfort. You can choose to add contrast stitching on leather models, whilst power recliner options with USB charging point are also available.

AVAILABLE IN FABRIC AND LEATHER.

SEATTLE

Seattle is available in the following models:



3 SEATER SOFA



3 SEATER RECLINER SOFA



2.5 SEATER SOFA



2.5 SEATER RECLINER SOFA



2 SEATER SOFA



2 SEATER RECLINER SOFA



ARMCHAIR



RECLINER ARMCHAIR



FOOTSTOOL



FOOTSTOOL

	H	D	W	Seat Height	Seat Depth	Seat Width	Clearance needed for full recline
All dimensions in mm/inches							
Armchair	1010/39.8	1040/40.9	960/37.8	510/20.1	540/21.3	420/16.5	-
2 Seater Sofa	1010/39.8	1040/40.9	1500/59	510/20.1	540/21.3	960/37.8	-
2.5 Seater Sofa	1010/39.8	1040/40.9	1720/67.7	510/20.1	540/21.3	1180/46.5	-
3 Seater Sofa	1010/39.8	1040/40.9	2020/79.5	510/20.1	540/21.3	1480/58.3	-
Footstool	405/15.9	590/23.2	735/28.9	-	-	-	-
Storage Footstool	405/15.9	590/23.2	735/28.9	-	-	-	-
Recliner Armchair	1010/39.8	1040/40.9	565/22.5	510/20.1	540/21.3	420/16.5	1695/66.8
2 Seater Recliner Sofa (Double)	1010/39.8	1040/40.9	1500/59	510/20.1	540/21.3	960/37.8	1695/66.8
2.5 Seater Recliner Sofa (Double)	1010/39.8	1040/40.9	1720/67.7	510/20.1	540/21.3	1180/46.5	1695/66.8
3 Seater Recliner Sofa (Double)	1010/39.8	1040/40.9	2020/79.5	510/20.1	540/21.3	1480/58.3	1695/66.8

All measurements are approximate and relate to the overall size of the item including soft arm cushions where fitted and back cushions. All recliner furniture supplied on fixed feet. Show wood feet in a choice of finishes are available on static pieces only. Recliner available in manual or power versions. Power versions have touch buttons with USB charging point. 2, 2.5 and 3 seater double recliner sofas are delivered in 2 sections which link together. Seat cushions on recliner chairs/sofas are a fixed type. Our recliner furniture requires room to recline. Castors are available as an option on static pieces only. Scatter cushions are available at extra cost.